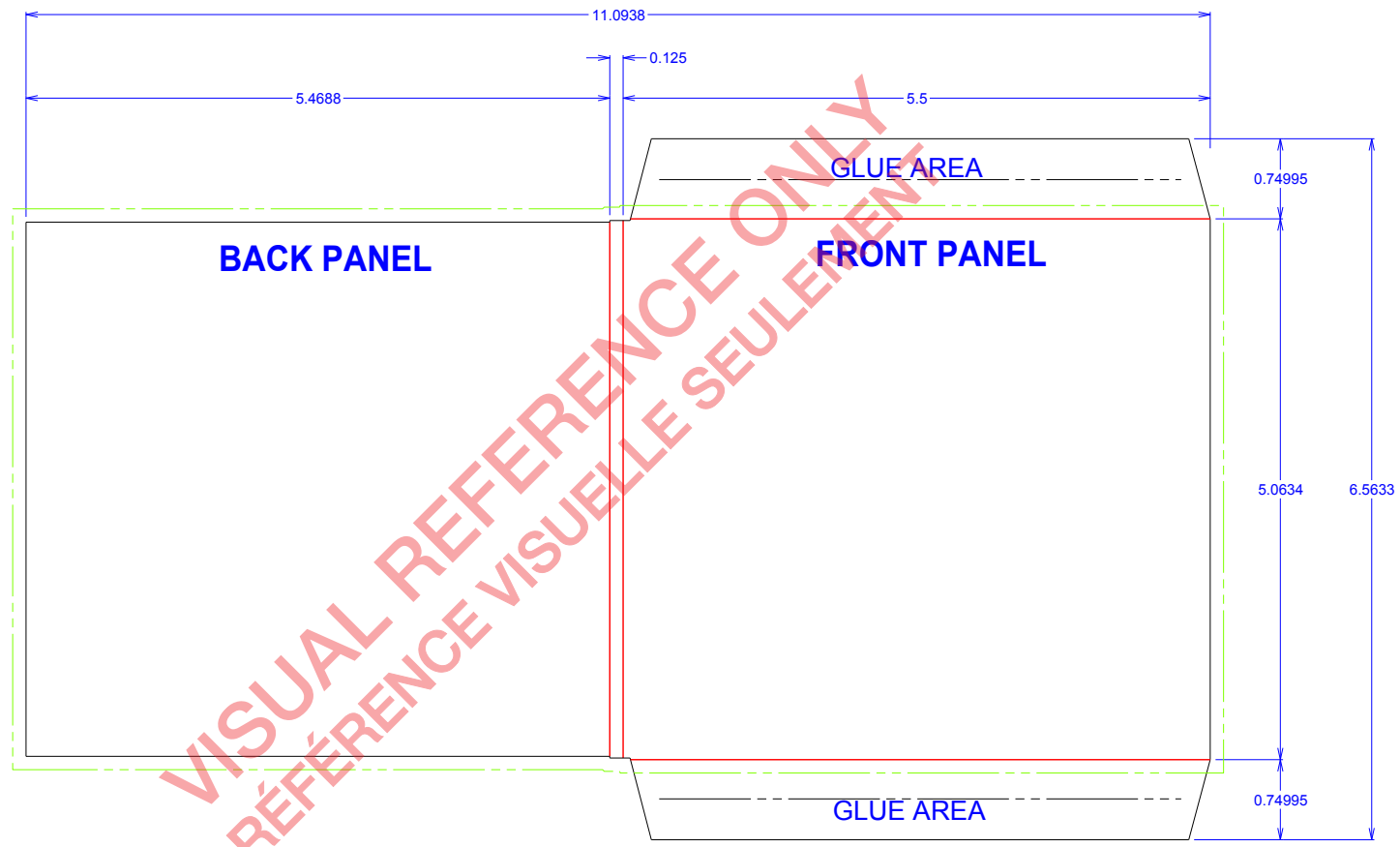


**** MANUAL ****
**** GLUING ****



↔
GRAIN DIRECTION

REFERENCE:	5" CD MINI JACKET 1/8" LP SPINE	MATERIAL:	I-SBS-15	NUMBER OF PANELS:	2
STYLE:	CD Custom mini jacket	OPEN BLANK:	6.5634 x 11.0938	NUMBER OF TRAY:	
SIZE:	5.5 x 0.125 x 5.0634	RULE LENGTH:	65.293	TRAY POSITION:	
		DATE:	08/31/2017	NUMBER OF POCKET:	1
		DRAWN BY:	P.P.	STYLE OF POCKET:	CLOSE END